



# Agenda

## Norwich Trails Committee and volunteers monthly meeting

7 pm, January 6, 2021

**Zoom:** <https://us02web.zoom.us/j/87549007740><sup>1</sup>

### AGENDA

#### 1. Approval of agenda

2. Comments from those present

#### Trail infrastructure

3. Reports on recent trail blockages and actions taken or planned

4. Inventory available on Google Sheets, linked from <https://norwichtrails.org/get-involved/>

5. Brief report on bridge replacement on Ballard Trail

6. Update on concrete parking lot barriers at the new Brown Schoolhouse Road bridge

7. Trailhead kiosks budgeted for FY 2021-22: How acquired, information to be included

8. Signage standards: Locations, information provided, materials, lettering

9. Proposed 2021 trail work projects

a. Upper Ballard bank and gully crossing at area where the trail approaches the brook

b. Access to Betty Booth trail on former Pepper property

c. Treadway improvement at the Ballard Park end of Ballard Trail

#### Trail use

10. Safe use of trails on town land during hunting season

11. Possible adoption of trail: from Cossingham to powerline ROW to form loop with AT, Heyl Trail

#### Financial

12. Trails infrastructure categories for funding by 2021 grants.

13. Planning for FY 2022-23 budget: Parking

#### Other

14. Norwich Historical Society program series for January and February “Discovering Norwich”

15. Continuation of the Discover Norwich Trails program in 2021

---

<sup>1</sup> For dial-in information and assistance, see next page.

16. Items for February meeting
  - a. Infrastructure inventory – Signage locations
  - b. Follow up on Grant proposal ideas

**17. Adjourn**

**Dial-in Information:**

Meeting ID: 875 4900 7740

One tap mobile

+13017158592,,87549007740# US (Washington D.C)

+13126266799,,87549007740# US (Chicago)

Dial by your location

+1 301 715 8592 US (Washington D.C)

+1 312 626 6799 US (Chicago)

+1 646 558 8656 US (New York)

+1 253 215 8782 US (Tacoma)

+1 346 248 7799 US (Houston)

+1 669 900 9128 US (San Jose)

Meeting ID: 875 4900 7740

Find your local number: <https://us02web.zoom.us/j/kAWNTrvYq>

**Contact for assistance:**

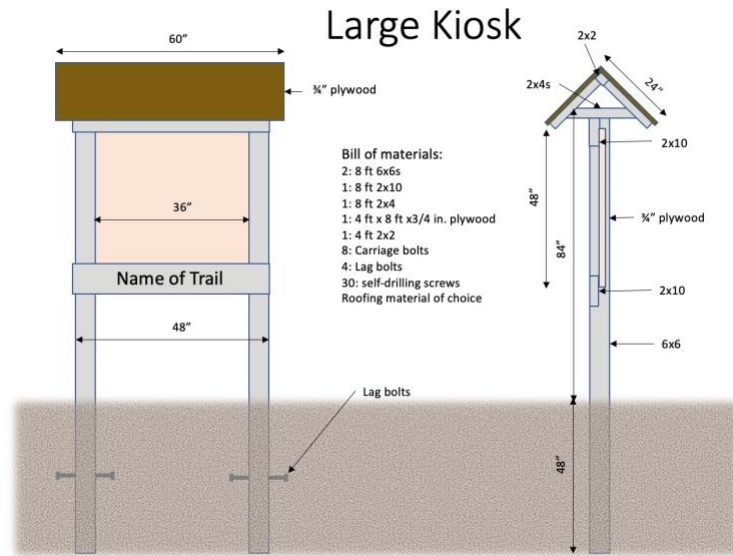
Nick Krembs (802) 649-1048

## Item 7. Trailhead kiosks

*Draft suggestions for discussion:*

Possible content for large kiosks, placed at trailheads with off-road parking lots:

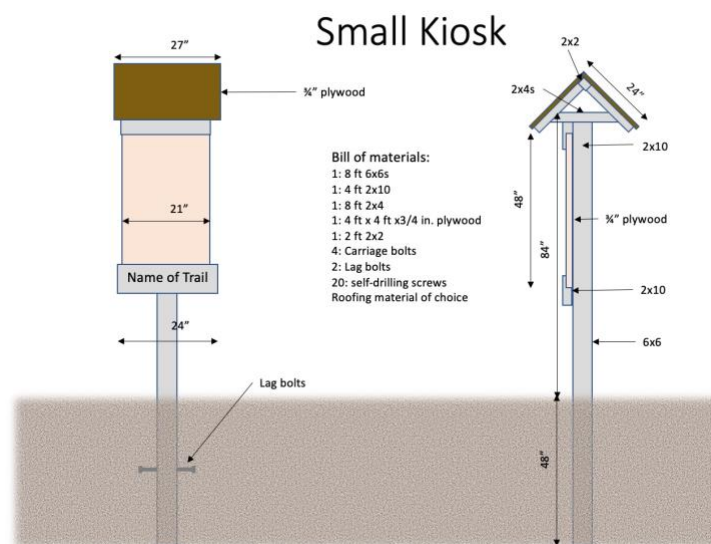
- Large map of trails connecting to trailhead
- Small trail system map
- Posted guidelines
- Web URL and contact info



Large kiosk

Possible content for small kiosks, placed at trailheads with roadside parking:

- Small map of trails connecting to trailhead
- Web URL and contact info



Small kiosk

## **Item 8. Signage standards**

*Draft suggestions for discussion:*

### **Overview**

Norwich trails lack a consistent methodology for guiding their users. Attitudes towards signage spans the gamut from minimalism to prominent signage with complete information. These are suggestions for sufficient signage to guide the reasonably alert trail user without allowing signs to become obtrusive. Signs are an intermediate source of guidance between kiosks and blazes

### **Kiosks**

Kiosks offer maps and guidance at trailheads. A large kiosk should be placed at every trailhead with off-road parking. A small kiosk should occur where the trailhead only has roadside parking.

### **Placement**

Signs should be placed at trail junctures, including trailheads, trail junctions, and (as needed) where the trail diverts from or onto a woods road.

### **Materials**

Signs should be made from unfinished 2 x width pressure-treated wood.

### **Lettering**

Routed one-inch letters: painted for visibility at trailheads, *unpainted* elsewhere.

### **Information**

At trailhead: Name of trail, distance to far trailhead

At intersection: Name of trail, distance to trailhead in each direction

At trail diversions: "Trail" (with arrow)

### **Blazes**

Blue, as follows:

- Blaze in one direction at a time before turning around at the end of the trail.
- Space blazes well apart and at constant intervals.
  - Fifty yards apart at a minimum.
- Blaze live, conspicuous trees close to the trail (on either side) with dark bark
- Blaze at eye level.
- Avoid painting two blazes on either side of the same tree in case it falls.
- Omit blazes on well-defined woods roads.

## **Item 10. Safe use of trails on town land during hunting season**

*A correspondent suggested that the Trails Committee might want to consider the idea of potential trail closure for nonhunters during rifle season as well as other possible ramifications from Vermont state law for liability in public use of trails on municipal lands. Here is how Vermont law speaks to this question:*

**VSA 12 § 5791 & 5795: Limitations on Landowner Liability:** “The purpose of this chapter is to encourage owners to make their land and water available to the public for no consideration for recreational uses by clearly establishing a rule that an owner shall have no greater duty of care to a person who, without consideration, enters or goes upon the owner's land for a recreational use than the owner would have to a trespasser. ....*This chapter shall not apply to lands owned by a municipality or the State.*”

**VSA 13 § 4009 Negligent use of gun:** “A person who carelessly or negligently wounds another person by gunshot shall be imprisoned not more than five years or fined not more than \$1,000.00, or both.”

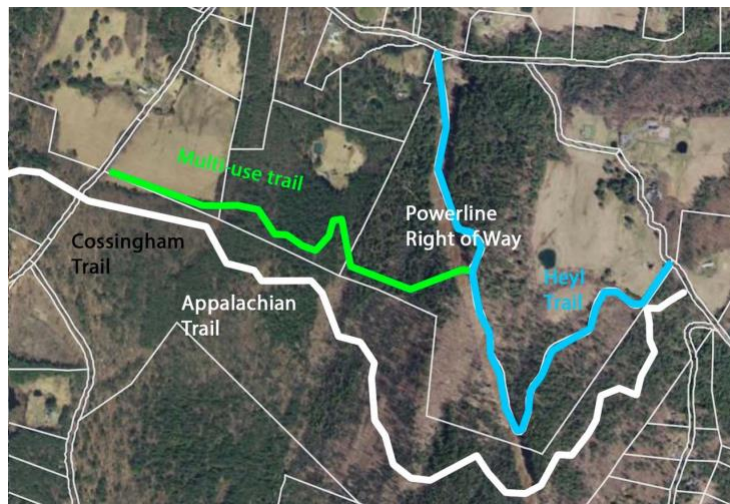
**VSA 10 §441 Vermont Trails System:** “...it is declared to be the policy of this State to provide the means for maintaining and improving a network of trails to be known as the ‘Vermont trails system.’ ... The Vermont trails system shall consist of those individual trails recognized by the Agency of Natural Resources with the advice of the Greenways Council. The Agency, with the advice of the Council, shall establish criteria for recognition of single use and shared use trails. .... No public or private owner of land that is a part of the Vermont trails system shall be liable for any property damage or personal injury sustained by any person using these trails unless the public or private owner intentionally inflicts the damage or injury.”

**Item 11. Possible adoption of trail**

*Outcome of this discussion will determine whether to follow up with the landowners, who have been preliminarily contacted.:*

**Description:**

A trail built on the northern boundary of the Appalachian Trail Corridor between and connecting the Cossingham Trail and Heyl Trail, shown as, “Multi-use trail”.



Multi-use parallel on north side of AT corridor

**Landowners:**

- SPAN: 450-142-12388  
STRAUSS JUSTIN, MIHALY ELENA

70 COSSINGHAM RD  
NORWICH, VT, 05055

- SPAN: 450-142-11669  
WILKINSON HOLLY J, WILKINSON JON J  
391 BRAGG HILL RD  
NORWICH, VT, 05055
- SPAN: 450-142-11665  
SCHLEICHER PAULA U TRUSTEE, SCHLEICHER MARK C TRUSTEE  
PO BOX 590  
NORWICH, VT, 05055-0590

***Questions asked of landowners:***

1. Was the trail built with your permission?
2. Does the trail conform to your expectations?
3. Does the current use of the trail cause problems?
4. Would increased use of the trail cause problems?
5. Would you be interested in having Norwich Trails volunteers help maintain it?
6. Would you be willing to sign a revocable agreement with the Norwich Trails Committee?
7. Would you be willing to have it shown on the Norwich Trails website?
8. Would you be willing to have it be described as part of a loop hike?

***Questions to ask of Norwich Trails volunteers:***

1. Would addition of this trail to our network be a net positive?
2. Would it cause an undue burden on our volunteer workload?
3. What signage would be required?
4. What additional infrastructure would be required?

**Item 12. Infrastructure categories for funding by 2021 grant requests**

*Initial ideas for discussion:*

- Trail signs
- Printing of kiosk information

**Item 13. Planning for FY 2022-23 budget: Parking**

*The theme of the 2022-23 budget could be parking, which properly belongs in the Public Works budget, perhaps under a new line item, "Trail parking". A summary of unmet parking requirements, as of December 2020, follows:*

- Gile Mountain—parking lot needs capacity for at least 11 more cars.
- AT/Heyl—Roadside parking need to be made more defined with room to completely pull off Elm Street to assure emergency vehicle passage and possible overflow capacity on Hickory Ridge Road. Four additional spaces are required.
- Burton Woods Road—Two additional off-road parking spots are indicated.
- Brown Schoolhouse Road—Lower end: one handicap space with turn-around
- Brown Schoolhouse Road—Upper end: one road-side space on Bragg Hill Road

**Item 14. NHS program, "Discovering Norwich"**

*Query from Norwich Historical Society, Cheri Mather:*

I am reaching out as a board member of the Norwich Historical Society. We are thinking about putting together a program series for January and February all around discovering Norwich. There are two big goals for the project. First is to offer some programming that will provide Norwich residents with knowledge and inspiration to explore their town this winter while being socially distant. Second is to benefit the Main Street restaurants. The fee for the program will be a meal at one of the restaurants or a donation to a food pantry. We are hoping this will be a collaborative project and are reaching out to individuals and local organizations to see if they would be interested in working with us to offer a ZOOM program, probably on a Thursday evening at dinnertime (thus the meal purchase) between January 21 and February. ... *Trails: The best trails for family hiking, cross country skiing and snowshoeing in town*