



DRAFT Agenda

Norwich Trails Committee and volunteers monthly meeting

7 pm, February 3, 2021

Zoom: <https://us02web.zoom.us/j/87549007740>¹

AGENDA

1. Approval of agenda

2. Comments from those present
3. Report on fund balances available for trails

Trail infrastructure

4. Reports on recent trail blockages and actions taken or planned
5. Trail infrastructure data collection:
 - Proposed new sign locations
 - Recording lat/long vs. mileage?
6. Trailhead kiosks budgeted for FY 2021-22: Layout of information to be provided.
7. Signage standards: Form working group to report in March.
8. Proposed 2021 trail work projects
 - a. Upper Ballard bank and gully crossing at area where the trail approaches the brook: Plan for improvement.
 - b. Access to Betty Booth trail on former Pepper property: Update?
 - c. Treadway improvement at the Ballard Park end of Ballard Trail: Reconnaissance report.

Trail use

9. Possible adoption of trail from Cossingham to powerline ROW to form loop with AT, Heyl Trail: Status report.
10. Winter hikes: Participate in Recreation Department program as leaders.

Financial

11. Clarification of purchasing procedures
12. Trails infrastructure categories for funding by 2021 grants: Update.
13. Planning for FY 2022-23 budget: Parking

Other

14. Website update: Adding minutes, link to infrastructure data.

¹ For dial-in information and assistance, see next page.

15. Norwich Historical Society program series for January and February “Discovering Norwich”:
Update
16. Continuation of the Discover Norwich Trails program in 2021: Update
17. Items for March meeting
 - a. Kiosk information: Pricing of proposed material.
 - b. Signage standards: Report
 - c. Grant proposal: First draft

18. Adjourn

Dial-in Information:

Meeting ID: 875 4900 7740

One tap mobile

+13017158592,,87549007740# US (Washington D.C)

+13126266799,,87549007740# US (Chicago)

Dial by your location

+1 301 715 8592 US (Washington D.C)

+1 312 626 6799 US (Chicago)

+1 646 558 8656 US (New York)

+1 253 215 8782 US (Tacoma)

+1 346 248 7799 US (Houston)

+1 669 900 9128 US (San Jose)

Meeting ID: 875 4900 7740

Find your local number: <https://us02web.zoom.us/j/87549007740>

Contact for assistance:

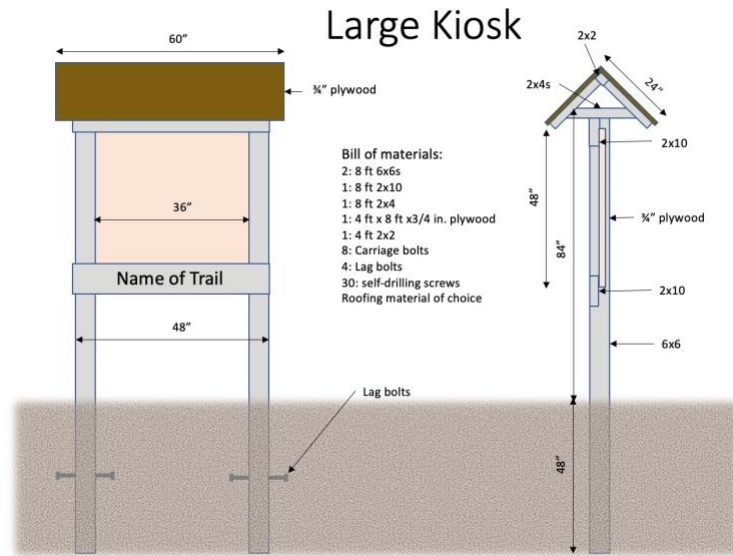
Nick Krembs (802) 649-1048

Item 6. Trailhead kiosks

Draft suggestions for discussion:

Possible content for large kiosks, placed at trailheads with off-road parking lots:

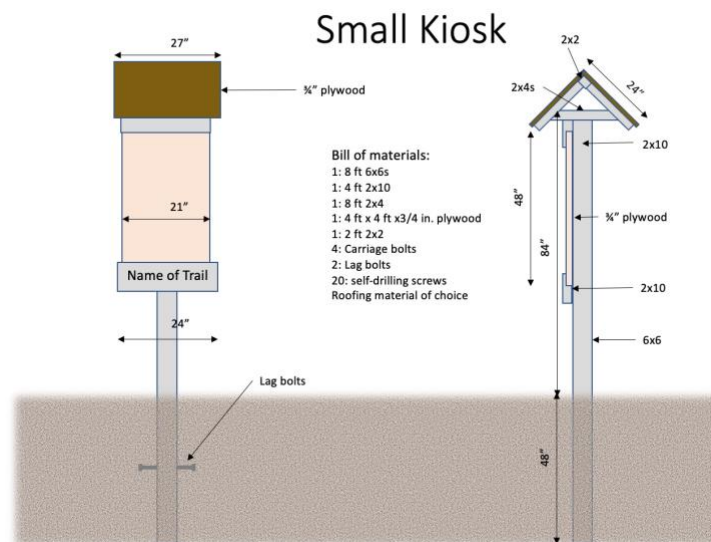
- Large map of trails connecting to trailhead
- Small trail system map
- Posted guidelines
- Web URL and contact info



Large kiosk

Possible content for small kiosks, placed at trailheads with roadside parking:

- Small map of trails connecting to trailhead
- Web URL and contact info



Small kiosk

Item 7. Signage standards

Draft suggestions for discussion:

Overview

Norwich trails lack a consistent methodology for guiding their users. Attitudes towards signage spans the gamut from minimalism to prominent signage with complete information. These are suggestions for sufficient signage to guide the reasonably alert trail user without allowing signs to become obtrusive. Signs are an intermediate source of guidance between kiosks and blazes

Kiosks

Kiosks offer maps and guidance at trailheads. A large kiosk should be placed at every trailhead with off-road parking. A small kiosk should occur where the trailhead only has roadside parking.

Placement

Signs should be placed at trail junctures, including trailheads, trail junctions, and (as needed) where the trail diverts from or onto a woods road.

Materials

Signs should be made from unfinished 2 x width pressure-treated wood.

Lettering

Routed one-inch letters: painted for visibility at trailheads, *unpainted* elsewhere.

Information

At trailhead: Name of trail, distance to far trailhead

At intersection: Name of trail, distance to trailhead in each direction

At trail diversions: "Trail" (with arrow)

Blazes

Blue, as follows:

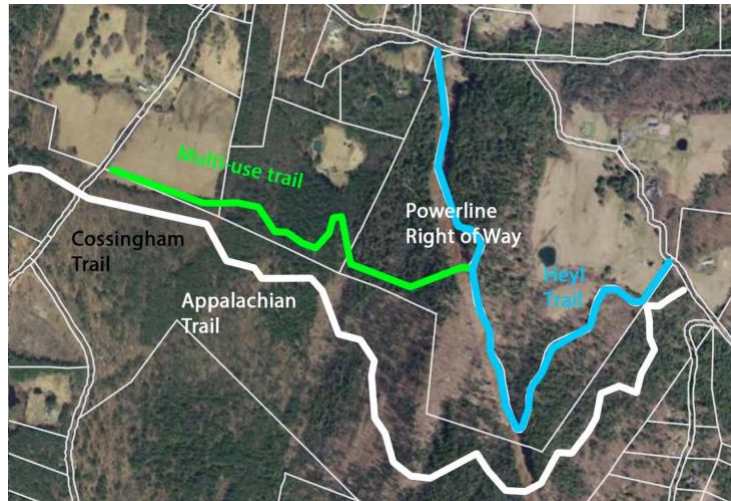
- Blaze in one direction at a time before turning around at the end of the trail.
- Space blazes well apart and at constant intervals.
 - Fifty yards apart at a minimum.
- Blaze live, conspicuous trees close to the trail (on either side) with dark bark
- Blaze at eye level.
- Avoid painting two blazes on either side of the same tree in case it falls.
- Omit blazes on well-defined woods roads.

Item 9. Possible adoption of trail

Outcome of this discussion will determine whether to follow up with the landowners, who have been preliminarily contacted.:

Description:

A trail built on the northern boundary of the Appalachian Trail Corridor between and connecting the Cossingham Trail and Heyl Trail, shown as, "Multi-use trail".



Multi-use parallel on north side of AT corridor

Landowners:

- SPAN: 450-142-12388
STRAUSS JUSTIN, MIHALY ELENA
70 COSSINGHAM RD
NORWICH, VT, 05055
- SPAN: 450-142-11669
WILKINSON HOLLY J, WILKINSON JON J
391 BRAGG HILL RD
NORWICH, VT, 05055
- SPAN: 450-142-11665
SCHLEICHER PAULA U TRUSTEE, SCHLEICHER MARK C TRUSTEE
PO BOX 590
NORWICH, VT, 05055-0590

Questions asked of landowners:

1. Was the trail built with your permission?
2. Does the trail conform to your expectations?
3. Does the current use of the trail cause problems?
4. Would increased use of the trail cause problems?
5. Would you be interested in having Norwich Trails volunteers help maintain it?
6. Would you be willing to sign a revocable agreement with the Norwich Trails Committee?
7. Would you be willing to have it shown on the Norwich Trails website?
8. Would you be willing to have it be described as part of a loop hike?

Questions to ask of Norwich Trails volunteers:

1. Would addition of this trail to our network be a net positive?
2. Would it cause an undue burden on our volunteer workload?
3. What signage would be required?

4. What additional infrastructure would be required?

Item 11. Infrastructure categories for funding by 2021 grant requests

Initial ideas for discussion:

- Trail signs
- Printing of kiosk information
- Funding of website

Item 12. Planning for FY 2022-23 budget: Parking

The theme of the 2022-23 budget could be parking, which properly belongs in the Public Works budget, perhaps under a new line item, "Trail parking". A summary of unmet parking requirements, as of December 2020, follows:

- Gile Mountain—parking lot needs capacity for at least 11 more cars.
- AT/Heyl—Roadside parking need to be made more defined with room to completely pull off Elm Street to assure emergency vehicle passage and possible overflow capacity on Hickory Ridge Road. Four additional spaces are required.
- Burton Woods Road—Two additional off-road parking spots are indicated.
- Brown Schoolhouse Road—Lower end: one handicap space with turn-around
- Brown Schoolhouse Road—Upper end: one road-side space on Bragg Hill Road